



MONTHLY MEMBERSHIP PROGRESS REPORT

District 9 SE

Results as of: 01/31/2019

GMT: OPEN

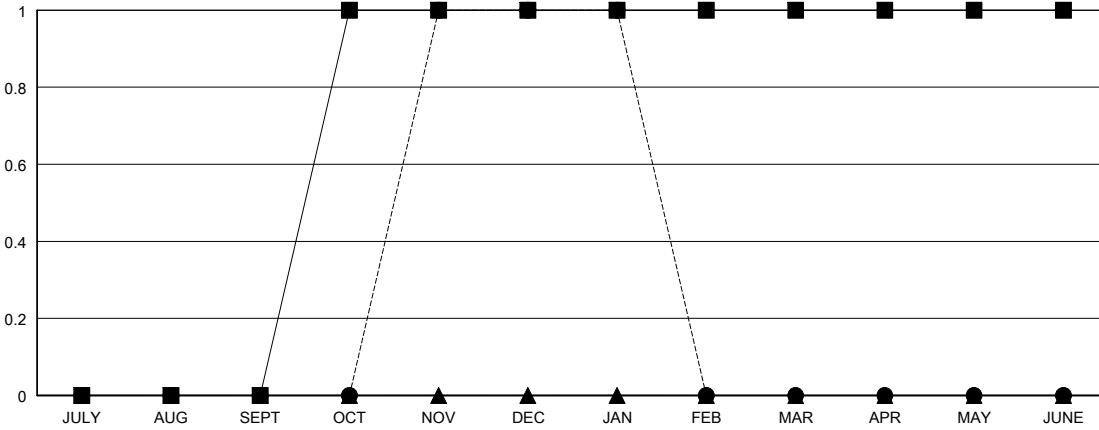
LOCATION IOWA

GMT CA

Clubs			
RESULTS FOR 2018-2019			
QUARTER	NEW CLUB GOAL	NEW CLUBS	DROPPED CLUBS
JULY/AUG/SEPT	0	0	0
OCT/NOV/DEC	1	1	1
JAN/FEB/MAR	0	0	0
APR/MAY/JUNE	0	0	0

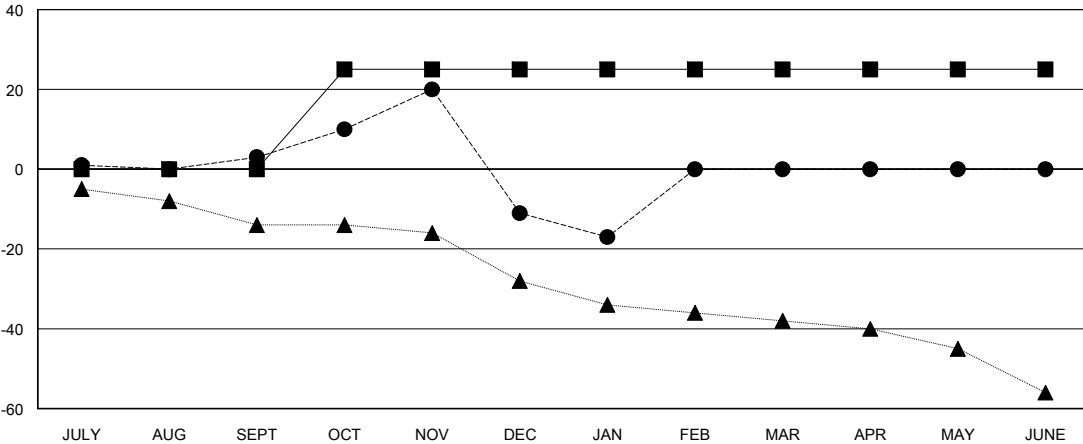
Members			
RESULTS FOR 2018-2019			
QUARTER	MEMBER GROWTH NET GOAL	MEMBER GROWTH ACTUAL	DROPPED MEMBERS ACTUAL (including transfers)
JULY/AUG/SEPT	0	12	7
OCT/NOV/DEC	25	35	49
JAN/FEB/MAR	0	2	8
APR/MAY/JUNE	0	0	0

GOALS AND ACTUAL NEW CLUBS CUMULATIVE



- - CURRENT YEAR GOALS FOR NEW CLUBS
- - CURRENT YEAR ACTUAL NEW CLUBS
- ▲ - LAST YEAR ACTUAL NEW CLUBS

GOALS AND ACTUAL MEMBERS CUMULATIVE



- - MEMBER GROWTH NET GOAL
- - MEMBER GROWTH ACTUAL
- ▲ - LAST YEAR MEMBERSHIP ACTUAL

DROPPED CLUBS: 1

18 CLUBS OF 49 ADDED 1 OR MORE NEW MEMBERS

GENDER DISTRIBUTION	
MALE	771 (69.71%)
FEMALE	335 (30.29%)
Women Percentage Fiscal Year Goal: 32%	

DROPPED MEMBERS	
DECEASED	8
CLUB CANCELLED	9
OTHER	47
TOTAL	64

[CLICK HERE FOR CUMULATIVE MEMBERSHIP DATA](#)

TOTAL FAMILY UNIT MEMBERS	233
FAMILY MEMBERS PAYING HALF DUES	117